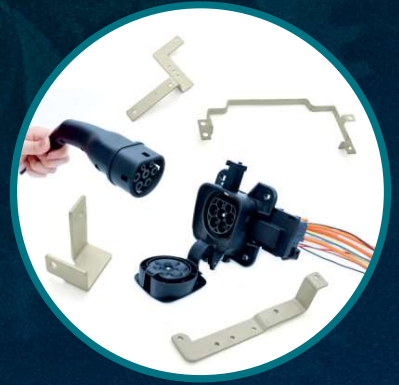


**30** YEARS OF  
INTERCONNECTION  
SOLUTIONS



# Terminal Technologies (I) Pvt. Ltd

Making the Right Connections



## Press - Fit Technology



## 2K Moulding





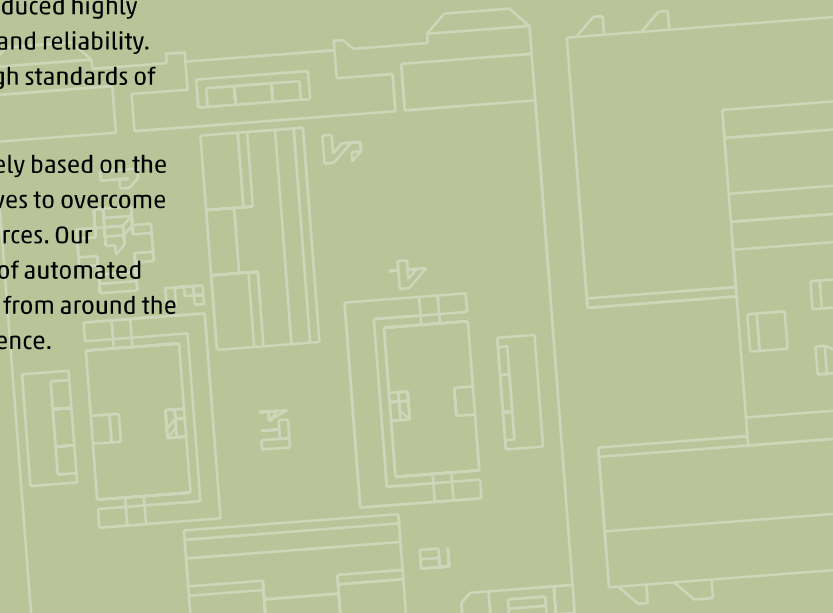
# About Us



Terminal Technologies (I) Pvt. Ltd. founded by Mr. C A Anto and Mr. Sanjay Negandhi, started off as a three-man operation, that over the span of 30 years has grown into a workforce of 1000+ employees, a full-fledged facility with the in-house capability to create part based solutions starting all the way from concept to mass production. From producing a mere 20,000 terminals per day, TT has grown to produce over 6 million parts per day.

What started as a way to mass produce simple components, has now evolved into an international solution provider for industries in India as well as across the world. TT has designed and produced highly complicated components with high precision, ease and reliability. Our customization is unparalleled and maintains high standards of quality and efficiency.

Designing these complicated components are entirely based on the conceptual and practical needs of our clients. TT strives to overcome all potential challenges by using our in-house resources. Our production and processes are fortified with the use of automated machinery and advance inspection systems sourced from around the globe to ensure consistency to win customer confidence.





C A Anto

# Message from our Directors



Sanjay Negandhi

TT family feels immense pleasure to greet and present 3 decades of manufacturing and supply of parts required for Automobile, Appliance, Electrical and Electronic industries with utmost precision and support to our customers.

What started off as a three-man operation and 1 machine in 1993 has now grown into 4 plants, producing over 1.5 billion stamped parts and 300 million plastic parts annually with an employee strength of over 1000.

Adhering to our vision, TT has been CONNECTing and GROWing with customer support and encouragement. The combined facilities include over 50 high-speed stamping machines, 65 molding machines, 20 design stations and state-of-the-art tool rooms situated in every plant with in-house capacity to create part-based solutions from concept to mass production.

Possessed with an obsession for precision, TT has invested in modern tool rooms and advanced inspection equipment across the plants which include 34 wire cut EDMs, VMCs, 3 CMM, and over a dozen vision measuring machines, hardness testers and Fischer scopes. Latest production machine includes 200T AIDA Press to operate critical progressive tools with up to 2 meters in length.

We are in the right spot to meet the need to fulfil the "Vocal for Local" theme and we are eager to work with your development team for further localization programs. We thank our valued customers who have steadfastly ensured their trust in us. You have been our strength and pillar of support in this journey.





# Connect & Grow

Connections are the heart of our business and we aim to create them to last over a lifetime. With over 30 years of manufacturing experience, we are delivering close to 2 billion connections every year for critical applications in Auto, Appliances, Electronics and Electrical industry. Connected to your life every day, TT deploys cutting edge technology for manufacturing connectors and terminals at a rapid pace towards our journey of excellence.

**We aim to:**

- Surpass customer expectations.
- Grab opportunities with customers and provide cost effective solutions to meet the challenges posed by the emerging technological requirements.
- Be a single source for all customer demands in the field of interconnection technology.



# The Power to Connect

## Our Capabilities

We at TT believe that the backbone for new product development is to invest in all the latest technologies. Thus we have heavily invested in design, state-of-the-art tool rooms and modern testing and validation facilities. With a team of over 20 designers with at least a 100 years of collective experience, we are always ready to serve and find best solutions for challenging and complex requirements.

We regularly use 3D, RPT and mold flow analysis prior to actual mold manufacturing, to ensure T0 trials are as accurate as they can be to their final sample submission.

Parts with over 500 dimensions in tolerance of less than 0.02 mm are often designed and executed with ease, meeting customer requirements and stringent testing & validation on an international level.

All tools and molds designs are supported with a range of VMCs, Wire EDMs and Spark EDMs using a host of precise grinding machines that achieve the desired output and meet stringent inspection requirements. TT can produce precise stamped parts, complex insert molded parts and assemblies with special fixtures offering one-stop solution for any new part introductions by our customers.





# EV Universe

With the EV theme being the route for saving the planet, the EV market in India is expected to explode soon in terms of volume. The segment is seeing large scale investments for localized production with major established players jumping into fray. With the Government pushing for increased localization, the capability for developing parts required for EV segment is the need of the hour. We are actively engaged with major manufacturers offering solutions for battery cell parts, manufacturing parts for PDU, BDU and BMS including the miniature connectors and terminals required for the wire harness. We are keen to work with manufacturers' R & D teams to develop parts suitable for Indian conditions and vehicle requirements. TT can support EV manufacturers with rapid prototyping as well as full part manufacturing to enhance the localization process.

TT has been supporting the majority of EV manufacturers in the country by developing critical stamped parts for battery cells and wiring programs, from thin to thick parts, low current applications to high current applications, TT has a single window solution for EV part requirements. TT has invested in heavy duty equipment for meeting the emerging needs from the EV ecosystem which is developing at a rapid pace across the country.

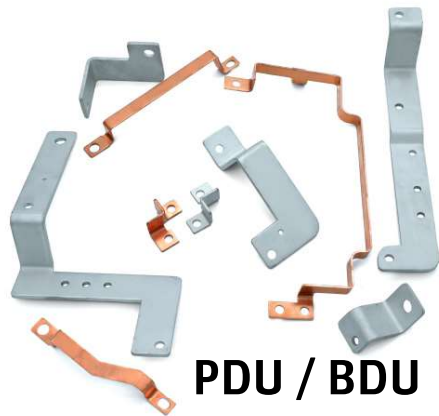
Design engineers at TT are working closely with R&D engineers of EV vehicle programs to offer solutions for OEMs to launch their models to market.

TT will not hesitate to pump-in further investments in segments for supporting the environment friendly ecosystem for sustenance of global welfare for all humankind.





**Battery Pack  
Components**



**PDU / BDU  
Components**



**Charging  
Inlet / Outlet  
Components**



**Miniature  
Wiring Harness  
Components**





# Industries we Serve



**ELECTRONICS**

**EV**

**SOLAR**



**AUTOMOTIVE**

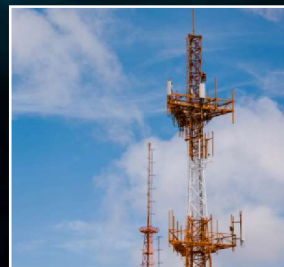
**ELECTRICAL**

Terminal Technologies was established with the aim to use its resources to cover the requirements for as many industries as possible ranging from automotive, auto-electrical, electrical, electronics, white goods appliances, switchgears and many more.

Our wide range of products are found almost at each end of the wires for termination and interconnection .



**GAS EQUIPMENT**



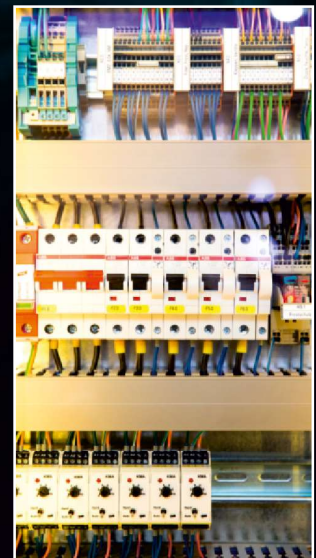
**TELECOMMUNICATION**



**RAILWAYS**



**FARM EQUIPMENT**



**SWITCH GEARS**

The equipment list contains the best machinery sourced across the globe for tool rooms, inspection and production lines. TT invests in enhancing their production capabilities every year in line with the customer's and our own growth requirements.



## High-speed Stamping Lines

High-speed Stamping Lines Equipped with BRUDERER, AIDA and YAMADA DOBBY press machines, TT has over 50 high-speed stamping lines with a speed of up to 1500 SPM. The tonnage range is between 25-200 and the length of tools deployed crosses over 2 metres. With progressive stage tooling (30 stages), TT can process complex bending parts to meet precise dimensional requirements. With an insistence to deliver the desired quality, TT has introduced dual-camera online inspection systems on multiple press lines to ensure reliability and consistency, which is the heart of our production. TT has the capacity to produce over 6 million parts a day to meet the requirements of various industries.



## Horizontal Injection Moulding Lines

Precise connectors and custom-built parts are produced with over 45 horizontal injection moulding machines with majority of them being all-electric. Multi-cavity moulds are used to achieve higher production required for connectors under controlled conditions. An in-house team of maintenance engineers keep the moulds in pristine condition to ensure continual efficiency in production of parts. All our latest moulding machines are Japanese made, all-electric machines.







## State-of-the-art Tool Room

Realizing the need for rapid development of new parts, TT has invested heavily to build multiple tool room facilities with the capability of building stamping tools, injection moulds and special moulds for over-moulded parts. The latest machinery sourced from all over the world ensures that the speed and accuracy of the tool room enables TT to meet the shortest lead time for challenging developments.

Complex programs from customers involving dozens of tools/moulds are developed on time, meeting all inspection criteria.

With tool room back-ups and in-house designers using the latest software, our ability to meet the most demanding requirements are easily verifiable through RPT parts and design validation data. Precise tool room machineries are supported with the latest inspection equipment which includes CMM as well as vision scope.



## Modern Testing & Validation Center

The Testing & Validation Department provides internal support for testing and stringent validation of various interconnection components based on international standards or customer provided specifications.

The Testing centre includes:

- Vision Measuring Machine - 14 Stations
- Micro Hardness Tester - 3 Stations
- Mitutoyo CNC CMM - 3 Stations
- Fischer scope XRAY XAN 250 - 3 Stations
- Vibration Test Chamber with Hot & Cold condition
- Thermal Shock Chamber
- Dust Test Chamber
- Water Test Chamber
- All Electrical Testing Instruments



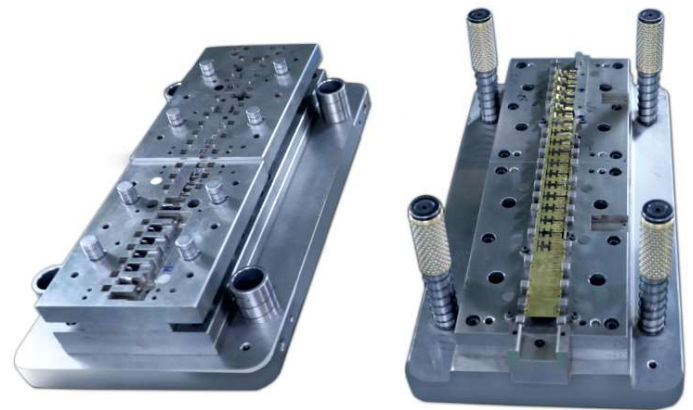
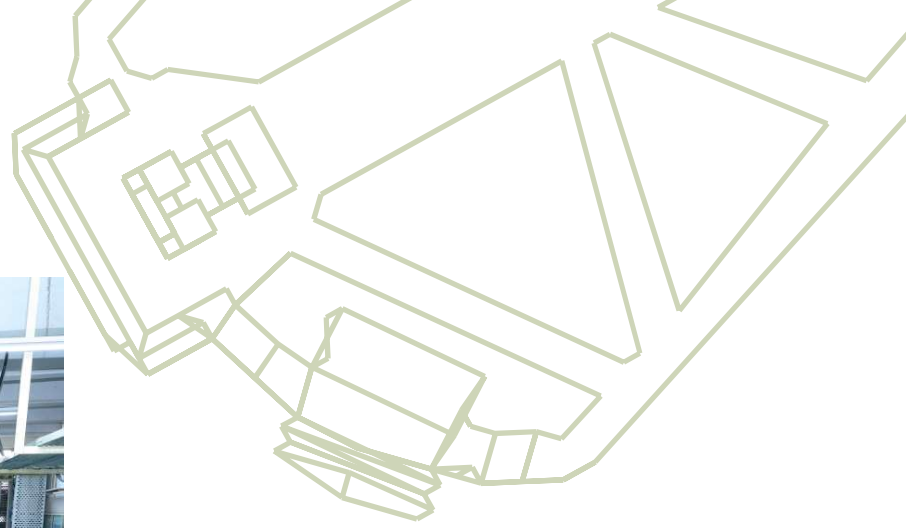
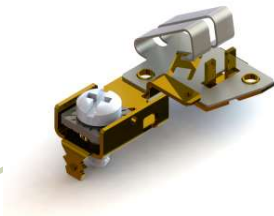


## Insert (Over) Molded Lines

Producing Insert Moulded parts has been a challenge for Indian industries and TT is in the right space to offer the right precision demanded for these parts. TT employs over 20 insert moulded lines, some of which are equipped with camera inspection features and robotic pick & place for the continuous production of parts required for automobiles, appliances and electronics.

## Automated Assembly Line

TT has developed skill sets required for in tool assembly of multiple metal parts making the failure proof contacts. In fact, our portfolio of multi metal parts growing day by day. We have even integrated assembly of such parts using specialized SPMs required for contactless assembly of critical parts



## Progressive Tooling and Injection Molds

Over 30 stages of progressive tooling with over 2000 mm tool length are designed and executed within short time lines. TT has already started double metal stamping to produce critically reliable components used in automobile applications like sensor connectors, relay bases and fuse boxes. Multi cavity injection moulds with over 500 inserts are well executed in our modern tool room. Complex insert moulds are routinely made for challenging part requirements of the growing auto electronics sector.







## Cable Terminals

A wide range of Terminals include 025, 040, 070, 090, 110, 187, 205, 250, 312, 350 & 375 and LA Series Terminals. Varieties of Fuse Terminals to suit ATO Blade, Mini, Glass, Maxi and MIDI fuses are available. Our latest capabilities include multi-metal stamping for meeting the most advanced requirements of high-end and reliable connections.



## Precision Custom Built Stamped Parts

Any ideas from the customer can be converted into reality with ease by the excellent team at TT. We can offer solutions right from part design to tool development by maintaining close interactions with our client. Major progressive tools are made for complicated parts that fit into precise moulding applications.



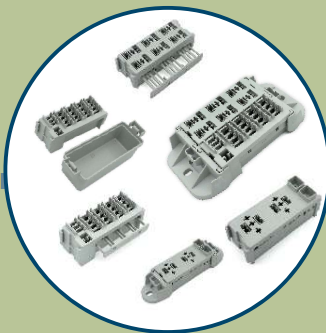
## Insert (Over) Moulded Parts

By combining the strength of stamping and moulding, TT has been developing critical insert moulded (Over moulded) parts for the automobile and electrical industry. Precisely moulded components are used in critical applications such as sensors, ignition contacts and header connectors.



## Plastic Connectors

TT produces over 700K connectors per day in the 025, 040, 070, 090, 110, 250, 312, & 375 series. A wide range of Relay Base & Fuse Boxes are available to meet various automotive electrical requirements. Over 40 Modern Injection Molding Machines gives versatility in production to meet the challenges posed by ever demanding automotive customers.



## Electrical Junction Boxes

With the increasing requirements of automobile electrical circuitry, TT has been designing completely new assembly solutions to accommodate the additional need for relays, fuses and diode assemblies. A variety of combinations are designed for customers to choose from, which can meet their needs arising out of the additional circuit requirements to improve the reliability of automobile electronics.



## Relay & Fuse Base Connectors

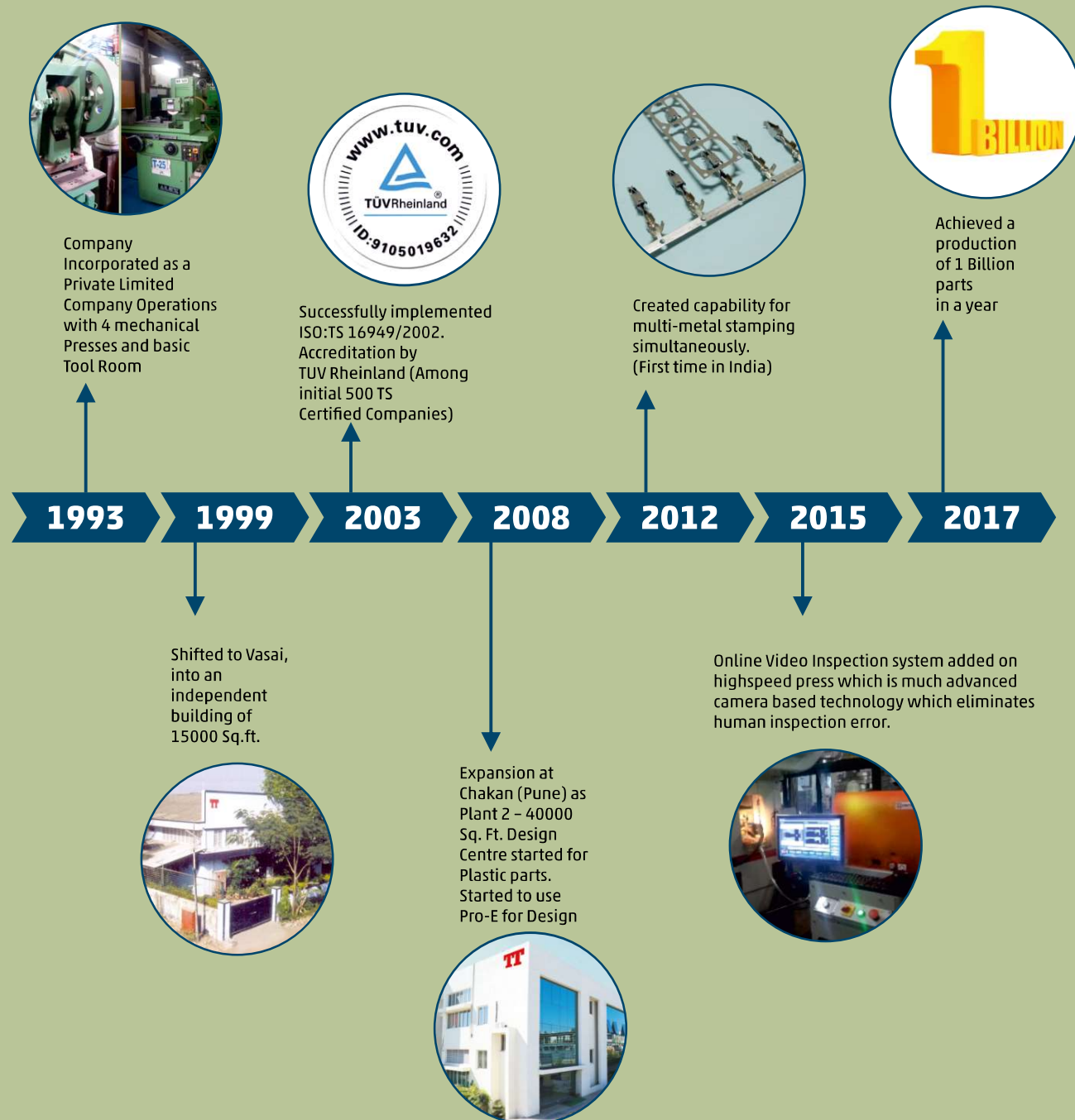
Many Relay bases are introduced to meet specific requirements of Auto Electronics. Various permutations and combinations are available for Power / ISO / Micro / Mini relay applications.







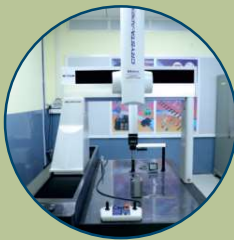
# Major Milestones







Expansion at Chakan (Pune) as Plant 3 27000 Sq. Ft. Facilities - Design Center, Modern Tool Room, Product testing & Validation center and Molding production



Installed first CNC CMM from Mitutoyo, Japan



Expansion at Bhilad (Gujarat) as Plant 4 40000 Sq. Ft. Facilities - Stamping, Modern Tool Room & Electro Plating

2017

2018

2018

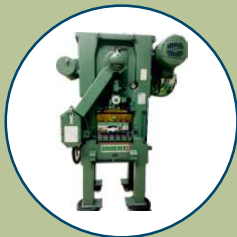
2019

2021

2021

2022

Installed first Bruderer High Speed stamping press from Switzerland.



Completed 25 Years of Interconnection Solutions. Introduces new vision 'Connect & Grow'



Year 2021 begins with combining synergies of TT & MacPro



Installed first AIDA (80T & 110T) Stamping Press from Japan



# Awards & Honors

Terminal Technologies has been awarded on several occasions for their efforts over the years. Our awards serve as a testament and milestone of our increasing standards of quality and performance.



**2005**

**Best Vendor Award** from M/s. Tata Yazaki Autocomp Ltd. in appreciation of Excellence in Cost Innovation during the year 2004-05



**2006**

**Best Performance** in Terminal and Press part Technology from M/s. Tyco Electronics Corporation.



**2007**

**Best of Best Supplier** Award from M/s. Tyco Electronics Corporation, 2nd Annual Supplier Meet.



**2012**

**Best Sheet Metal Supplier Award** from M/s. Tata Yazaki Auto Comp. Ltd.



**2014**

**Best New Development** Award from M/s. Magneti Marelli Motherson Auto Systems Ltd.



**2015**

**Best Supporting Supplier** Award from M/s. Schneider Electric India Pvt. Ltd.



**2016**

**Award of Appreciation** In recognition of outstanding contribution and support to Rotex Automobile Business in financial year 2015-16



**2017**

**New Product Development** Special Recognition from Siemens for Custom Built New Development



**2018**

Received the **TPM Award** for Implementation and Sustenance of TPM from Rinder



**2019**

**Supplier of the Year Award** (Overall Performance) from Rotex Automation Ltd. for the Year 2018-19 during Annual Supplier Conference



**2019**

**Award of Appreciation** In grateful appreciation for a generous contribution towards 'QCD' from Keihin Fie Ltd.



**2019**

**Committed to Excellence** In acknowledgment of significant efforts towards 'QCD & Response' for the financial year 2018-19 from Siemens





**2012**

**Win-Win Relationship**

Participated and successfully demonstrated the Win-Win relationship with our Tier 1 customer – Yazaki India Ltd.



**2012**

**SME Quality Award**

Participated in IEEMA SME Quality Award ISQA 2012 and Awarded SME Quality Certificate



**2013**

**SME Quality Award**

Participated in IEEMA SME Quality Award ISQA 2013 and Awarded SME Quality Commendation



**2017**

Received **Best Performance Award** from Luminous Power Technologies for Category - Innovation Year 2016



**2018**

**Award of Appreciation**

In acknowledgment of significant efforts towards 'QCDD & Response' for the financial year 2017-18



**2018**

Received **Gold Quality Award** from Rinder India Pvt. Ltd. Year 2017-18



**2019**

Certified as a **ZED Gold** from Ministry of MSME



**2020**

Award winner in the 2020 India 5000 **Best MSME Award** competition for Quality Excellence



**2022**

Received **Certificate of Appreciation** in recognition of outstanding support from Inteva



# Group Companies



## **MacPro Technologies Pvt. Ltd.**

TT has invested in one of the finest tool rooms from South India, Macpro Technologies India Private Limited. Apart from establishing a firm footprint in South India, it gives additional resources in mould making and 2K part developments. Macpro has extensive experience in critical mould development in segments such as connectors, Electrical, Electronic, medical and aerospace parts. Macpro has amassed the necessary knowledge for making 2K moulds with precision. TT is upgrading and modernizing the manufacturing capabilities at Macpro for capacity enhancement and part production.

Together with Macpro, TT can offer mould making as well part production of critical and complex plastic injection moulded parts and components in different materials as well as different colours. Well experienced designers are capable of proving the part to the print avoiding the necessity to import highly expensive moulds/parts from abroad. We are now in the position to offer solutions for any kind of conceptual design be it a component or a part. Experiences and learning are always deployed horizontally to maximize overall excellence and consumer experience. TT is committed to follow the latest trends in global manufacturing and offers international solutions with local cost advantage.





## **Selective Plating Technology Pvt. Ltd.**

Noticing a critical requirement for a technically qualified plating facility, TT has invested in a modern programmable plating plant at Bhilad, Gujarat. With a view to offer competitive technology, the plating facility has in house lab, jig making facility and testing facility including Fischer scope for measuring undercoat as well final coat. We can plate Tin matt, Tin gloss, Silver, Nickel and copper for both chain parts as well loose parts. The plating facility will soon be one of its kind in the country with facilities for strip plating, partial plating and reflow plating capabilities.

### **Reel-to-Reel Plating**

We utilize state-of-the-art custom built plating lines to produce superior quality and conserve precious metals.

#### **Processes include:**

Selective Plating, Overall Plating

### **Barrel & Rack Plating**

We utilize state-of-the-art custom built plating lines, which provide maximum flexibility and higher capacity. With our advanced barrel and rack equipment, we can process a large variety of parts with different designs and geometry. We utilize state-of-the-art process monitoring systems to ensure that we meet the stringent plating tolerances which ensures that every lot meets the highest quality standards.

#### **Plating Processes:**

Barrel Plating, Vibratory Plating, Rack Plating

### **Coil Plating**

Our new plating facility is one of the most technologically advanced coil plating facilities in India. Our state-of-the-art plating lines feature in-line automated process monitoring and in-line plating thickness measurement systems, which ensure the highest level of plating consistency. We also feature advanced material handling capabilities that can accommodate wider width coils at considerable weight.

#### **Coil Plating Capabilities:**

Material Widths up to 160 mm; Coil Weights up to 250 Kg; Coil Outer Diameters up to 1000 mm

#### **Plating Finishes:**

Tin, Reflow Tin, Nickel, Copper



# Connecting from the Heart @ TT

## CSR Activities & Social Involvement

CSR, Connecting @ heart has been the theme of TT in its CSR activities. TT intervenes in areas of rural education, Skill development ,Medical need and hunger management . Addressing the above, TT's medical mobile van covers over 50000 villagers in a year to meet their medical needs. The support to Savaii NGO is specifically to meet the rural health and educational needs. TT support food distribution program supported by Iskon meeting the mid-day meal of nearly 300 people per day outside TMH hospital. We are committed to supporting the marginalized of society as we connect and grow holistically.

Connecting through heart, TT has been promoting tribal area developments in a strong way. TT has developed over 10 anganwadis and developed sanitation and solar systems for schools in the tribal areas. Medical assistance is provided by mobile clinics and support to rural medical intervention centers. Mogra farming in tribal areas is supported so as to help develop the rural economy. TT regularly supports daily food distribution programs for cancer patients from outside Mumbai who are at TML hospital areas. Critical assistance is given to palliative care centers for cancer patients. Our goals were achieved easily as we had support from Savali & Bulbul Ray foundation.

Connecting the world with interconnection solutions extends to more than just the services we provide. TT has not forgotten its duty towards the less fortunate of our society. Throughout our success, it is imperative for us to uplift and provide as much assistance as possible to the underprivileged in our society and community. Over the years, we have been actively involved in CSR activities to enhance and improve the lives of those around us.



### Renovation of 8 'anganwadis' for over 400 children (2017)

Working closely with the Palghar District administration, TT has designed and renovated eight 'anganwadis' which houses more than 400 children. This was implemented in areas such as, Jadhav Pada, Mauli Pada, Birari Pada and many such villages under Vikramgad taluka. TT thanks the district administration and Savali Trust for their cooperation in executing the project.

### Donation of mobile clinic to provide healthcare to inaccessible rural areas (2017)

During the 25th year of our establishment, TT donated a fully equipped mobile clinic with doctor, nurses and a pathology lab to the NGO Savali Trust for deployment in areas such as Zaap, Pawar Pada, Phanas Pada, Kegwa, Vehle Pada, Karhe Kardhan, Kundacha Pada under Vikramgad taluka. The mobile clinic will touch 50,000 lives a year.

### Donation of patient beds to government primary health center (2019)

The government primary health center at Sativali Village, which caters to 3500 deliveries of pregnant women a year, lacked some patient beds for which they made an appeal to TT. During April 2019, Terminal Technologies was able to provide 6 such beds to their primary health center.

### Donation of patient monitoring systems (2019)

"Mata Baal Sankopan Kendra" at Sativali delivers around 3500 babies a year with a 0% fatality rate for mothers so far. TT





### **Renovation of Anganwadi & Skill Development Centre (2019)**

In association with the Gowalis Industries Association, Terminal Technologies worked on the renovation of an 'Anganwadi' at Sativali village. TT and the Association also decided to construct an additional floor in the 'anganwadi'. The floor is used for computer training to provide a greater opportunity for skill development for youngsters at a very low cost.

### **Organization of flood relief program for those affected during Kerala and Maharashtra floods (2019)**

In response to the floods that affected 110 students in Sangli, Maharashtra, a program was organized by the TT Pune team to offer relief. During the program, our organization donated school kits to every child which included instrument boxes and books. TT employees also received the chance to donate towards the Maharashtra and Kerala Fund collection drive. Our efforts are acknowledged by the Chief Minister of both the states.

### **Donation of 1000 lamps and transport vehicle in Palghar district (2020)**

Recently, we also received the opportunity to assist the students of Jawahar taluka, located in the district of Palghar. TT donated 1000 solar lamps for personal use to assist the children of this taluka. The lamps came to them in a convenient time too as exams were imminent.

We also donated a passenger transport vehicle to benefit the local mogra farmers in the area. This vehicle can help empower the local mogra farmers to sell their products at Mumbai flower market and they can get a better price

### **Free Medical Camp and Ration Kit Distribution (2020)**

In association with Savali Trust in providing Medical service during the Corona crisis and distribution of Dry Ration to starving Adivasi people, we have been able to successfully provide this help as under. From 18th March till 20th April our medical centre and 2 mobile vans have examined 4230 patients from 150 villages, who had no other source of medical facility available, as no OPD or dispensary is operating in that area. We are giving this medical service FREE OF COST which includes Medicines, Blood Test and IV treatment.

### **Dental Clinic & Skill Development Center (2022)**

TT Continues to get associated with Savali Trust. With this they will add a Dental Clinic and Skill Development Center. As part of the connecting hearts, we continue to touch as many lives as possible to make difference.

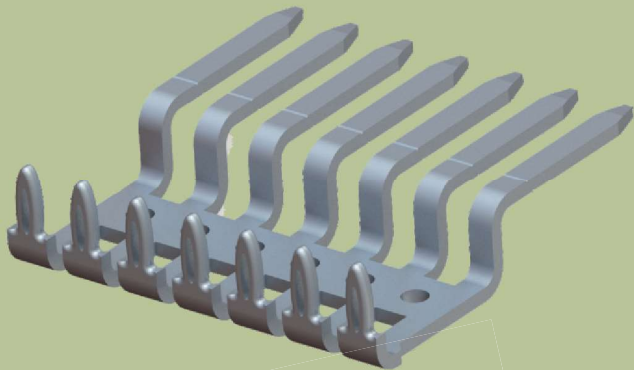
### **Food Distribution at TATA Hospital in association with Bulbul Ray Foundation (2022)**

With the boom of EV in Indian Automotive space getting louder, IT is fully chapped up to meet the





# Press - Fit Technology Parts



TT has been successfully developing press fit parts for connectors. The precision required for press fit are achieved through precise machining and tool execution at TT tool rooms. The part undergoes the right plating for the right performance of the solder less press fitted connections.

The import substitute part can easily save big to customers at local deliveries . We are eager to localize the press fit parts and customize them for your requirements.

## Press-in & Push-out

Low press-in force, high push-out force and RoHS compliant

## Low resistance

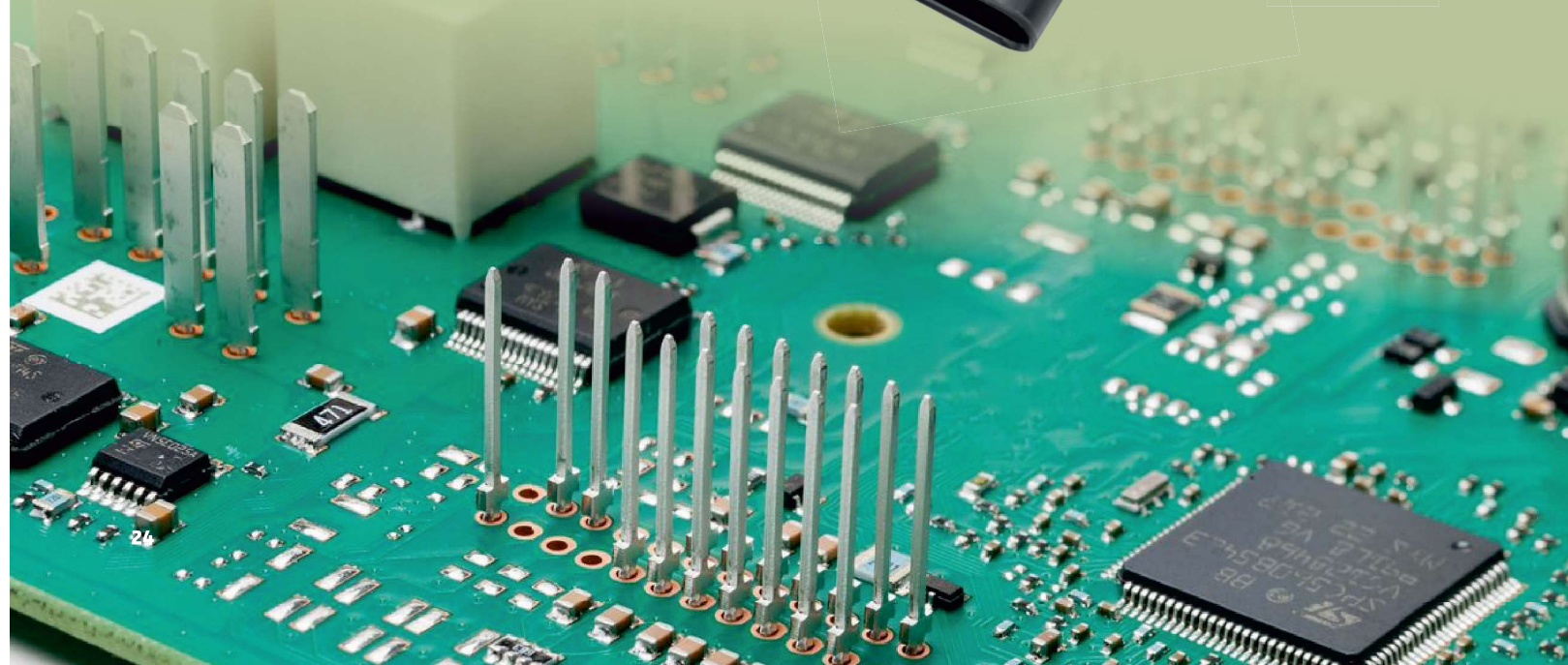
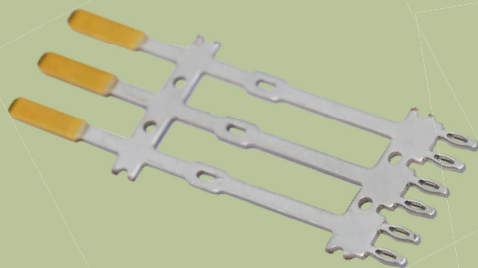
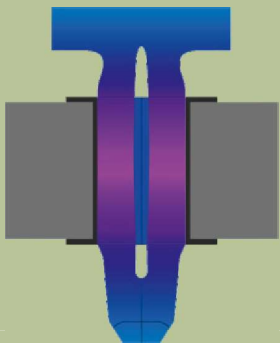
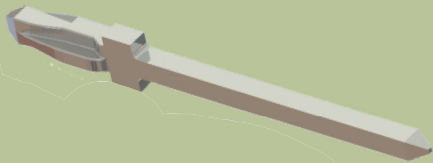
Temperature range:  $-40^{\circ}\text{C}$  to  $150^{\circ}\text{C}$  and low electrical resistance

## Gas-tight

Gas-tight, reliable connection and high mechanical stability

## High elasticity

High elasticity, no tin chips and high economical efficiency



# 2K Moulding

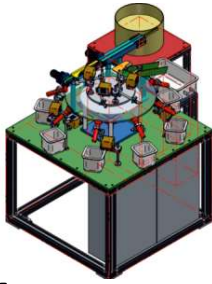


## 2K Injection Moulding Process

TT has been developing multi material 2 K parts and have 2 k moulding machines at 2 locations. A variety of material has been used for multi material moulding and moulds are made in-house tool rooms saving on imports. We can design and execute 2k molds with least lead time and customize to customer requirements.

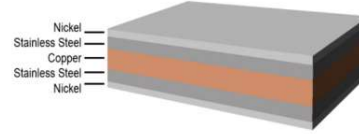
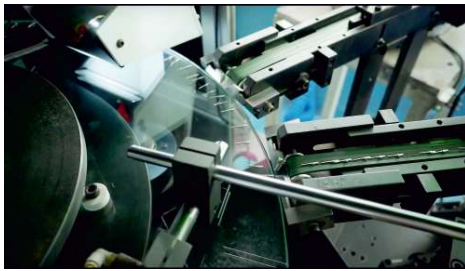






### Camera & Sensor based Inspection

Automatic inspection / sorting machine for precision custom built stamped parts. The machine is capable for Dimensional as well as Visual Inspection of the components.



### Special Raw Material Processed

5 layer special clad material used for EV components

#### Material Attributes

- Resistance/Laser Weldable
- Solderable Surface
- Superior conductivity to pure Nickel
- High power capacity
- Stainless steel layers provide robust welds
- Lighter weight (lower density)
- Increased conductivity enables gauge reductions
- Nickel surface provides high contact corrosion protection



#### IATF 16949 : 2016 from TUV Rheinland

All 4 Plants (Mumbai, Pune, Bhilad & Bengaluru) are IATF 16949:2016 certified.



#### ISO 14001:2015 from TUV Rheinland

Pune Plant is ISO 14001:2015 certified.



#### ISO 45001:2018 from TUV Rheinland

Pune Plant is ISO 45001:2018 certified.



#### Safety Markings UL Certification & CE Marking



#### IMDS (International Material Data System)

In the IMDS, all materials present in finished automobile manufacturing are collected, maintained, analysed and archived. Transmitting the data regularly.



#### RoHS Certification

All raw material used for production and materials used for plating are strictly be RoHS Compliant only



#### REACH Certification

All raw material used for production are strictly be REACH Compliant only



#### ZED Gold Certified

Participated in MSME's Zero Defect Zero Effect and received GOLD certificate



#### Sedex Member

Sedex is a membership organisation that provides one of the world's leading online platforms for companies to manage and improve working conditions in global supply chains.



#### Responsible Sourcing

The Conflict Minerals Reporting Template (CMRT) is a free, standardized reporting template developed by the Responsible Minerals Initiative (RMI) that facilitates the transfer of information through the supply chain regarding mineral country of origin and the smelters and refiners being utilized.



## Terminal Technologies (I) Pvt. Ltd

### Connect & Grow with us:

Terminal Technologies is always ready to assist with the design, conception and execution of any kind of components and parts. Connect with us to learn more about how we can help:



#### PLANT 1

Terminal House, Merchant Industrial Complex, Valiv, VASAI (East)-401208, Dist. Palghar, Maharashtra, INDIA Tel. : +91 9545455060 sales@terminaltechnology.com

#### PLANT 2

Gut No. 312 / 2 / 3 / 6, Nanekarwadi Industrial Area, Alandi Phata, Chakan, PUNE - 410501, Maharashtra, INDIA Tel. : +91 21356 36301 / 02 / 03 / 04 salespune@terminaltechnology.co.in

#### PLANT 3

Ground Floor, Plot No. 1A, Survey No. 415, Village - ZAROLI (Bhilad) - 396 105, Tal. Umbergaon, Dist-Valsad, Gujarat, INDIA Tel. : +91 89565 80845 salesbhilad@terminaltechnology.com

#### PLANT 4

MacPro Technologies, 56/7 Avalahalli, Virgonagar Industrial area, Virgonagar, Bengaluru - 560049, Karnataka, INDIA Phone : +91 9980176176 marketing@macpro-technologies.com www.macpro-technologies.com

[www.terminaltechnology.com](http://www.terminaltechnology.com)